

LIGEO™ SLC, Configurable Slim Line Dynamic Color LED Surface & Pendant Mount

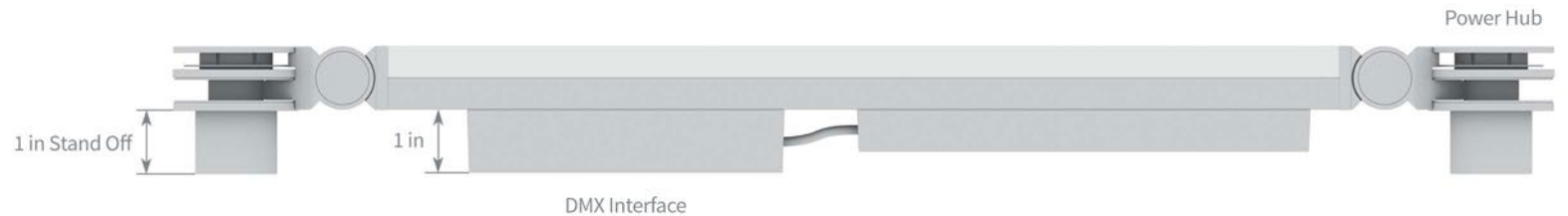


Features & Benefits

The perfect marriage of form and function. The sleek 3/4" profile provides for a modern look and feel. The custom built high performance LED boards make the SLC suitable for general illumination with over 480 delivered lumens per foot. LIGEO™ SLC features patented hub technology for quick and easy installation, with minimal wiring. Thoughtful engineering behind the hub design integrates both the electrical connection between fixtures and serves as the suspension or surface mounting points.

The LIGEO™ SLC is the perfect option to elevate any space with a dynamic focal point of color changing light. Easy of setup and breakdown makes the SLC well suited for permanent installation and event lighting. The LIGEO™ SLC uses red, green, blue and white LEDs to achieve a broad spectrum of colors for any application.

LIGEO™ SLC



LIGEO™ SLC, Specification Guide

Specifications

Construction

- Extruded aluminum housing with injection molded hubs. Anodised metal finish.
- Acrylic lens and gasketed end caps.
- 4 lb maximum load per LIGEO™ SLC

LED System

- Boards custom designed and fabricated for LIGEO™ SLC.
- FR4 PCB with premium LEDs, RoHS compliant.
- RGBW LEDs.
- Operating temperature ranges from 32° F to 104° F (0° C to 40° C).

Lifetime & Warranty

- Lifetime calculated: L70 > 60,000 hours with an ambient operating temperature of 25° C.
- 5 year limited warranty. For details please see our warranty document.

Electrical

- Constant voltage Class 2 driver.
- Standard 120-277V universal drivers.
- All fixtures require a power hinge. The power hinge has a 15' leader cable with flying leads.
- Power hinge leader cable is 2 conductor 13 AWG.
- Maximum 100 Watts per power hinge per UL, 320W per power hinge possible.
- Maximum distance from power hinge to driver is 100' using 13 AWG cable.

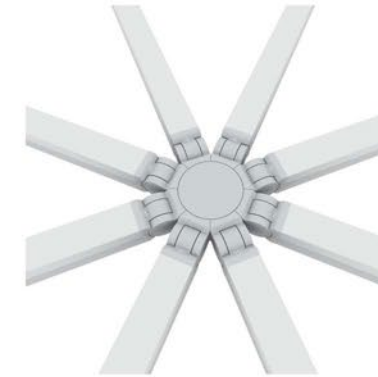
Dimming

- Dimming range from 0 - 100%.
- DMX control device required for all SLC installations.

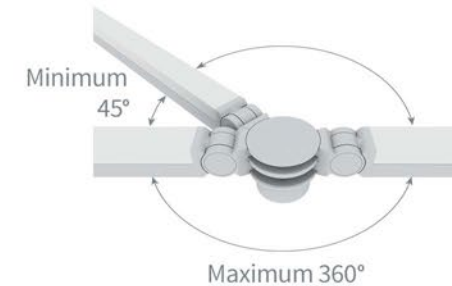
Lables

- Listed to UL standards for dry locations only.

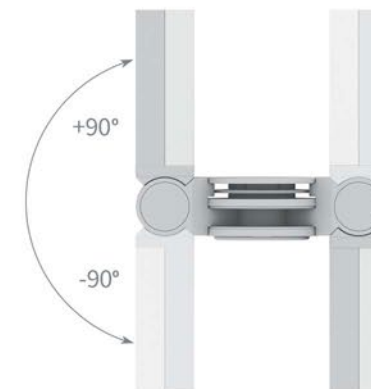
Configuration Details



Maximum 8 fixtures per hub.



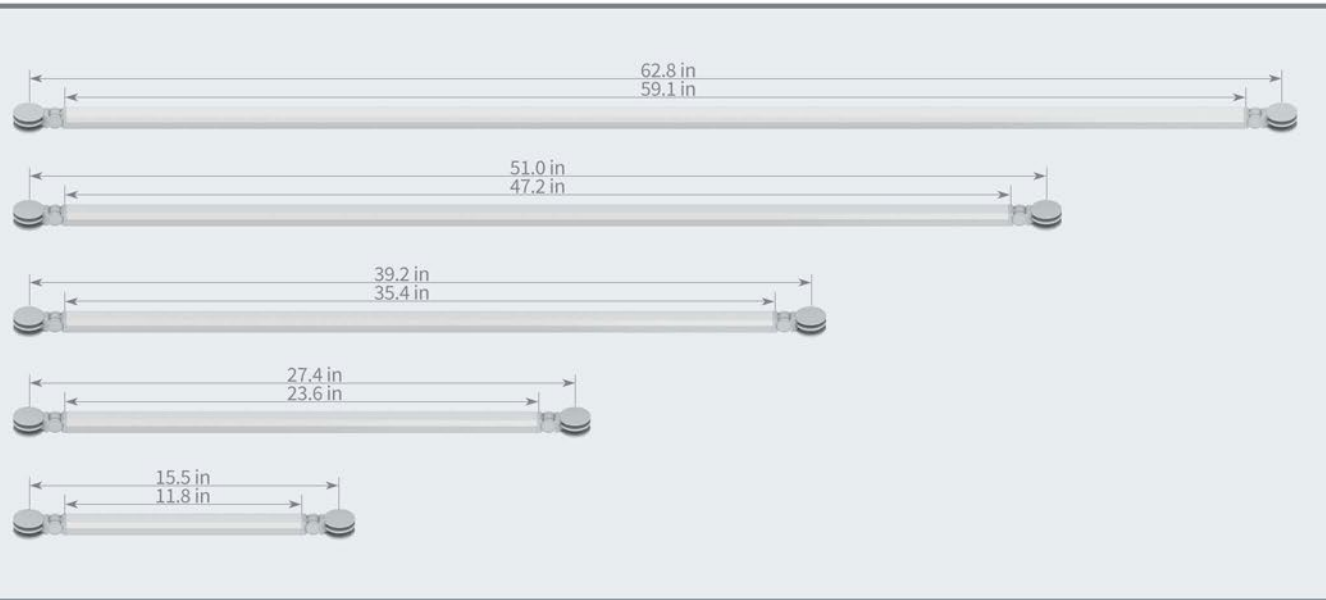
360° Rotation around each hub.
Minimum 45° between fixtures.



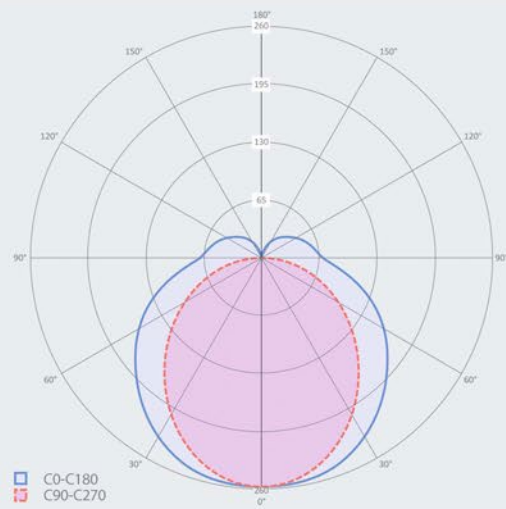
Maximum tilt 90° up and down.

LIGEO™ SLC, Specification Guide

Dimensions



Photometry



Polar Chart

Symmetrical lighting distribution in the C0-180 area (perpendicular to the longitudinal axis of the lamp) and the C90-270 area (along the longitudinal axis of the body of the lamp).

The light distribution and beam spread remains the same for all fixtures. Performance varies by length. Please refer to the part number matrix on page 4 for delivered lumens, LPW and wattage for each fixture.

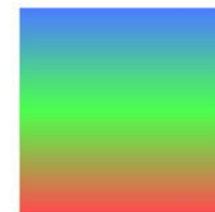
Standard Finish: Black.

Custom colors are available upon request, please consult your sales representative for a quote.








Color Specifications

RGB+
W5300K



LIGEO™ SLC, Specification Guide

Part Numbers

	 Black Order Number	 Silver Order Number	 Gold Order Number	 White Order Number	Light Length (in)	Fixture Length (in)	Weight (lbs)	Delivered Lumens	Power (W)	Lumens Per Watt
RGBW	29003020250				11.8	15.5	0.3	481	5.6	85.9
RGB+W 5300K	29006020250				23.6	27.4	0.5	962	11.3	85.1
Tube Control DMX	29009020250	Available only on request	Available only on request	Available only on request	35.4	39.2	0.6	1443	16.9	85.3
	29012020250				47.2	51.0	0.8	1924	22.6	85.1
	29015020250				59.1	62.8	1.0	2405	28.2	85.2
ACCESSORIES					NOTES:					
Power Hinge Cable	39020180302				One Stand Off included with each hub.					
Connector Hub	39021000002				Isolated hubs prevent flow of current between fixtures that are tied to different power supplies and may be required for larger installations.					
Connector Hub isolated	39022000002	Available only on request	Available only on request	Available only on request						
Suspended Hub	39021001002									
Suspended Hub isolated	39022001002									
Config Cable	29000910510									
3 Pin XLR/RJ45 Cable	29000910540									

LIGEO™ SLC, Specification Guide

Accessories & System Assembly

Accessories



Suspension Hub.



Connector Hub/Isolation Hub.

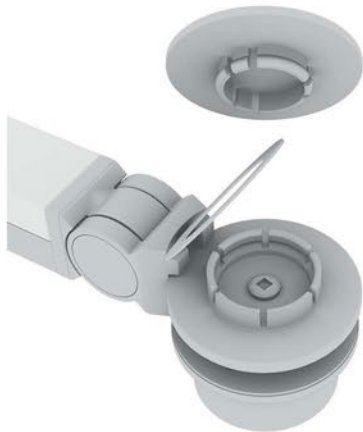


Power Hinge.



Stand Off.

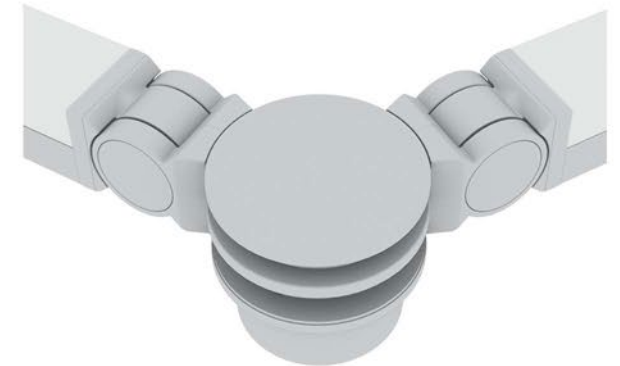
System Assembly



Step 1: Lift metal ring and slide end of LIGEO™ SLC into connector hub.



Step 2: Add LIGEO™ SLC fixtures to connector hub as needed following step 1.



Step 3: Snap the top cap onto connector hub to secure fixtures in place.

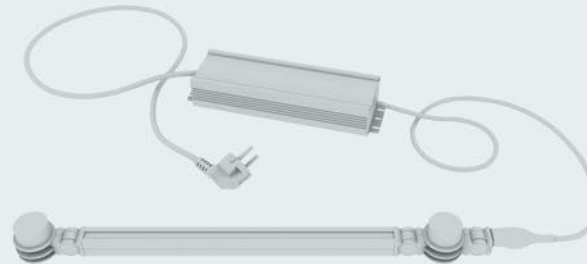
LIGEO™ SLC, Specification Guide

Drivers & Driver Locations

Central power supply location recommended.



Max run length 17 feet per UL.
Max run length 49 feet possible.



Max 100W per UL.
Max 320W per driver possible.
Multiple drives may be required.



Driver

DMX control device required for SLC installations.
Control device provided by others.

NOTES:

All drivers are remote. Max distance from driver to first fixture is 100 feet with 13 AWG cable.

Use only stranded 0.09 in jacketed wires with a maximum length of 16ft and a nominal minimum insulation thickness of 0.02 in.

Isolation hubs may be required for every 100W in larger configurations with multiple drivers.
Isolation hubs shown in red.